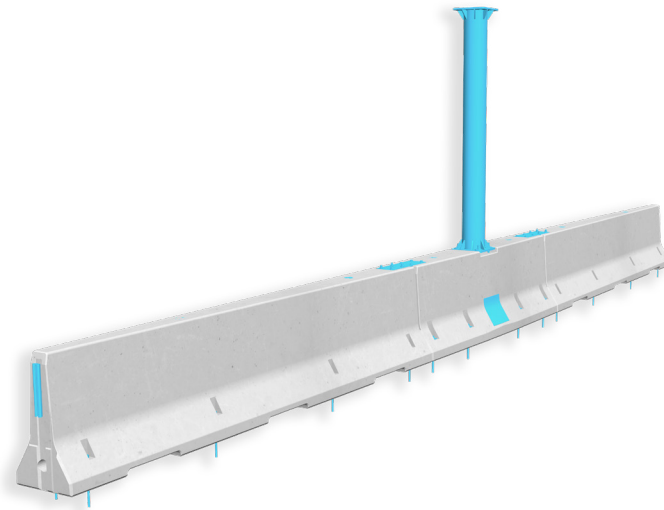


**REBLOC 120GS\_A**

## Technical Datasheet

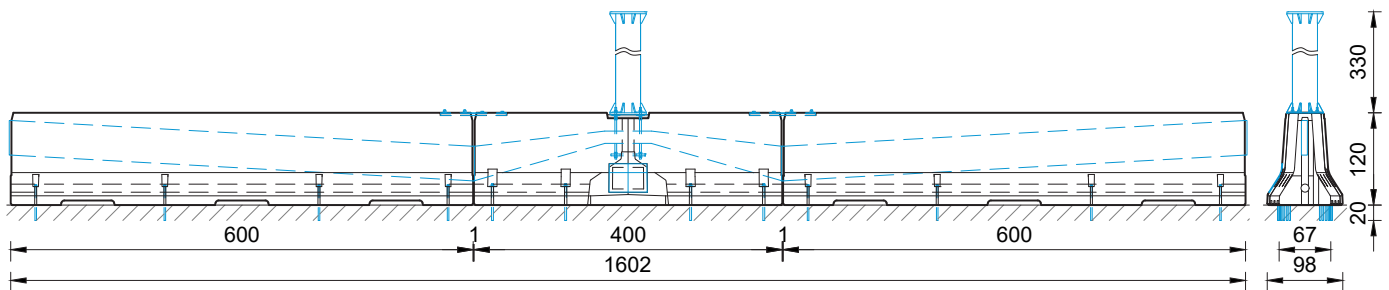
ASI B

**Precast Concrete  
Vehicle Restraint System****Traffic sign system  
Anchored**

REBLOC 120GS\_A

**Technical data**

Containment level	<b>H4b</b>
Working width	<b>W3 (<math>W_N \leq 1.0</math> m)</b>
Impact severity level	<b>ASI B</b>
Vehicle intrusion	<b>VI5 (<math>VI_N \leq 1.7</math> m)</b>
Required elements for traffic sign system	<b>1 x traffic sign element 120A_4LC.1 2 x traffic sign element 120A_6LC.1 1 x base pole RBP324x10_3.325;01</b>
Total length of traffic sign system	<b>1602 cm</b>
Installation   Dimensions   Weight Traffic sign element 120A_4LC.1	<b>anchored   L: 400 cm B: 98 cm H: 120 cm   approx. 6500 kg 8 x M24 adhesive anchors in asphalt   concrete per element</b>
Installation   Dimensions   Weight Traffic sign element 120A_6LC.1	<b>anchored   L: 600 cm B: 92 cm H: 120 cm   approx. 7280 kg 8 x M20 adhesive anchors in asphalt   concrete per element</b>
Application	<b>single-sided   double-sided</b>
Coupling/exposed steel parts	<b>fully integrated, exposed parts hot-dip galvanized</b>
Mounting cradle for light column	<b>4 x M24; 320/320 mm</b>
CE certification	<b>✓</b>

**Compatible route sections**

System	Containment level	Installation	Minimum installation length	Transition	Initial/end anchorage	Note
REBLOC 120A.1_7.5_5A	H4b	anchored; 5 adhesive anchors/element	61 m incl. 120GS_A	-	not necessary	conduit optional

all dimensions in cm